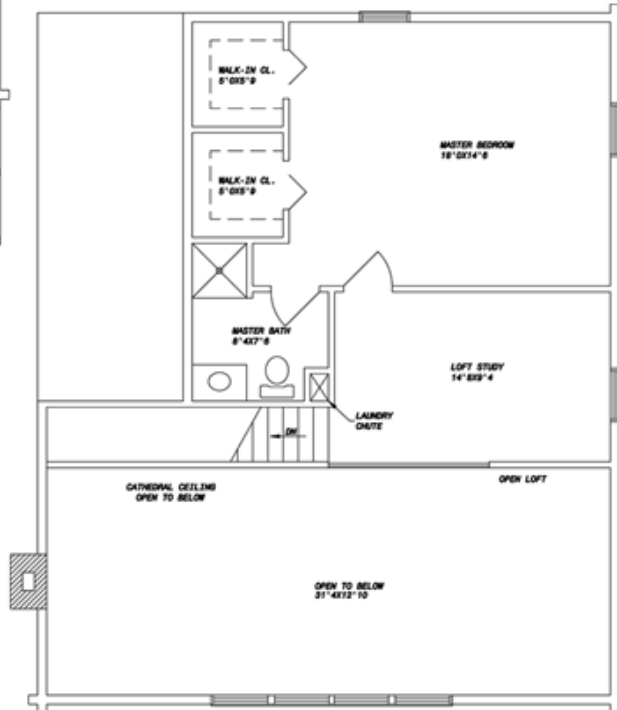


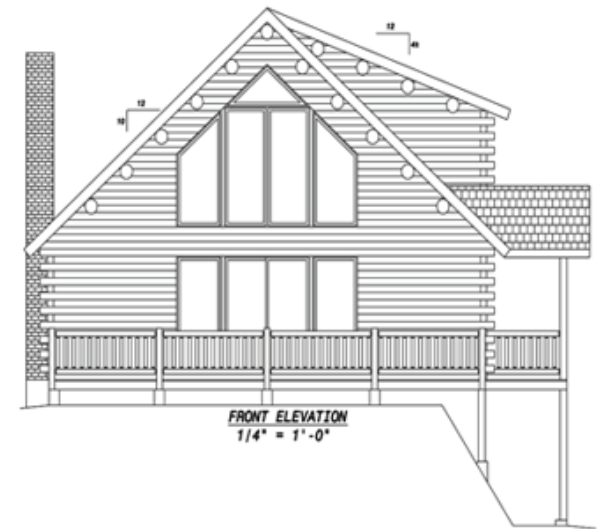
FIRST FLOOR PLAN
1/4" = 1'-0"



LOFT FLOOR PLAN
1/4" = 1'-0"



RIGHT SIDE ELEVATION
1/4" = 1'-0"



FRONT ELEVATION
1/4" = 1'-0"



www.MaineCedar.com
Toll Free: 855-532-2211